

# L575P1

## LED LINEAR KST

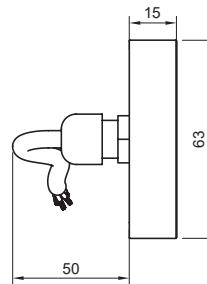
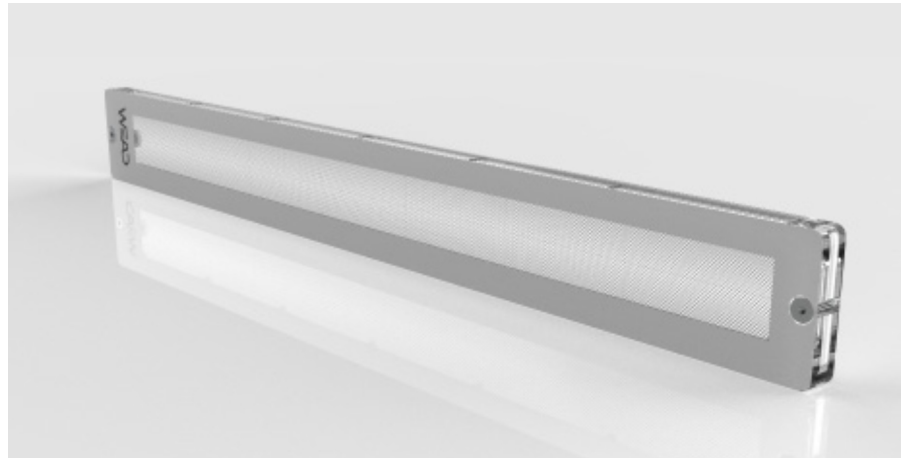
▣ WITH LINEAR LIGHT PATTERN

### Underwater spotlight

Flat, linear design for the special look:  
The KST Linear's housing is made of polycarbonate and is solid CNC machined, with no exposed metal parts at all. Latest RGBW multichip LEDs with dedicated chip in daylight white, provide seamless color changes and clear white. Sophisticated design for a harmonious luminous image.

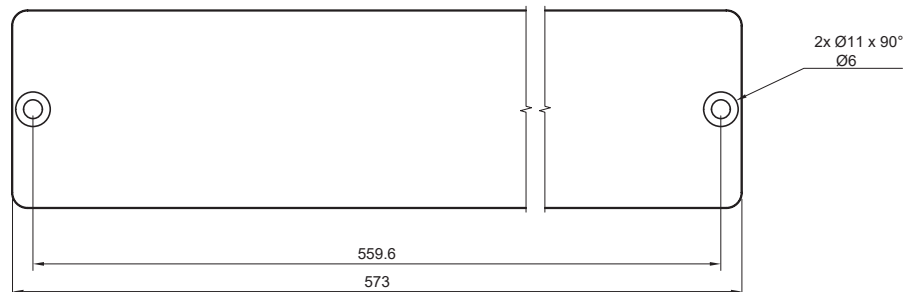
The recessed niche is optionally available for:

- Stainless steel
- PVC liner
- Concrete



### Specifications

- Installation opening: 575x65mm
- Installation depth: 50 mm
- Material: Polycarbonate
- Saltwater resistant
- RGBW multichip LED ON 28/56 Watt
- Linear light pattern
- With dedicated white in 4500K (daylight)
- Illumination angle approx. 160°



### Standard

- System voltage 24VDC
- Constant current 350/700mA
- RGBW: color change with separate daylight white in 4500K
- 15m connection cable

### Customized

- Custom branding
- Cable length

### Accessories

- Stainless steel niche
- PVC liner niche
- Concrete niche
- DMX Ctrl or CC Box

