

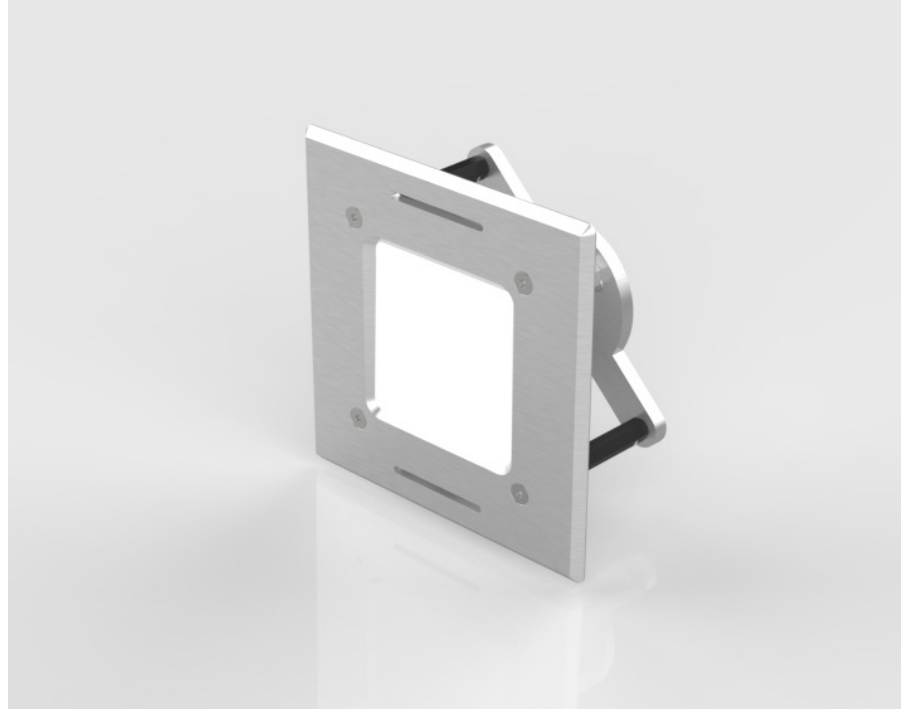
# Q110P1-T1

## LED QUAD KST TILE

○ WITH ROUND LIGHT PATTERN

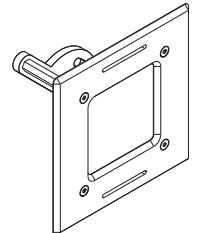
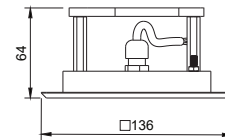
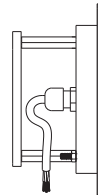
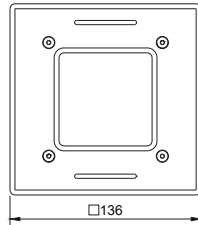
### Underwater spotlight

Low profile installation for stylish pool design. The robust, square housing of the LED Quad KST Tile is made of solid polycarbonate. The housing of the Tile is specially optimized for installation in a tiled pool. The stainless steel bezel completes the high-quality design. The latest RGBW multichip LEDs with their own chip in daylight white provide seamless color changes and a clear white. The LEDs have been arranged in a round shape. Sophisticated design for a harmonious light pattern.



### Specifications

- Mounting hole: inner dimension pot
- Orifice dimension: 136 mm
- Tile thickness: 0-30 mm
- Material light body polycarbonate
- Orifice plate: V4A stainless steel
- RGBW Multichip LED ON 27/54 Watt
- Round light pattern
- With dedicated white in 4500 K (daylight)
- Illumination angle approx. 160°



### Standard

- System voltage 24VDC
- Constant current 350/700mA
- RGBW: color change with separate daylight white in 4500K
- 15m connection cable

### Customized

- Custom branding
- Cable length

### Accessories

- Tile pot
- DMX Ctrl
- CC Box

