

Q110P1

LED QUAD KST

○ WITH ROUND LIGHT PATTERN

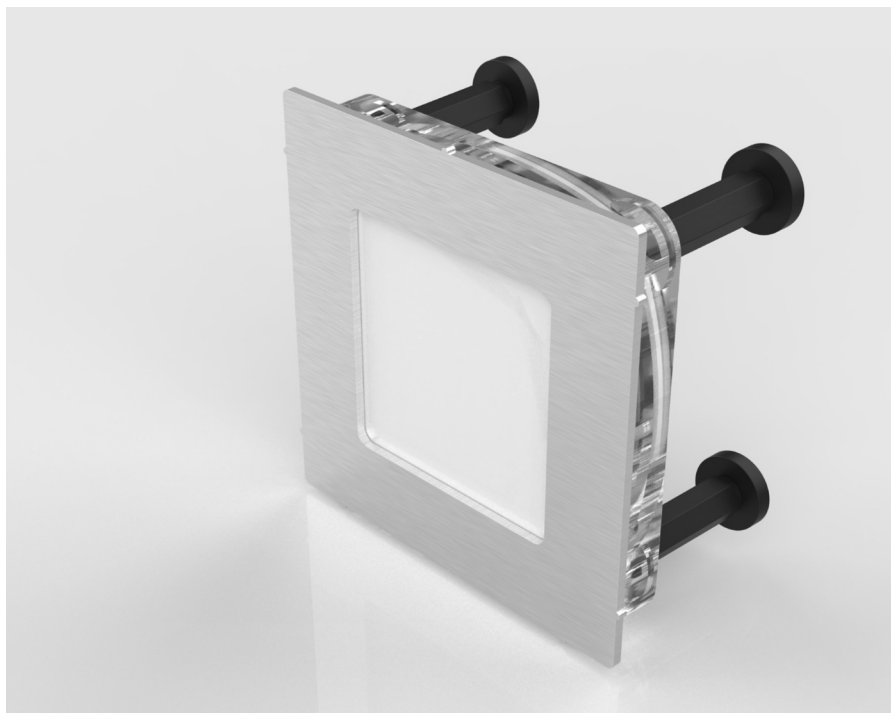
Underwater spotlight

Flush mount for clean pool design:

The sturdy, square housing of the LED Quad KST is made of solid polycarbonate. Durable with no exposed metal parts or visible screws. The stainless steel bezel completes the high-quality design. Latest RGBW multichip LEDs with dedicated chip in daylight white, provides seamless color changes and a clear white. The LEDs have been arranged in a round shape. Thoughtful design for a harmonious luminous image.

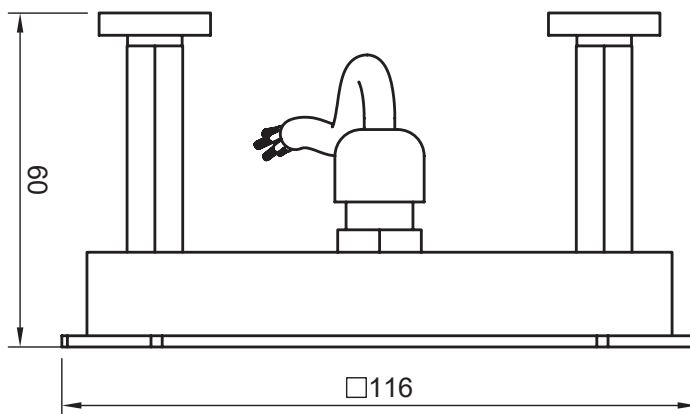
The recessed niche is optionally available for:

- Stainless steel
- PVC liner
- Concrete



Specifications

- Installation opening: 116x116 mm
- Installation depth: 62 mm
- Material of light body: polycarbonate
- Coverplate: V4A stainless steel
- No visible screws
- Magnetic mounting in 1.4462 niche
- RGBW Multichip LED ON 27/55 Watt
- Round light pattern
- With dedicated white in 4500K (daylight)
- Illumination angle approx. 160°



Standard

- System voltage 24VDC
- Constant current 350/700mA
- RGBW: color change with separate daylight white in 4500K
- 15m connection cable

Customized

- Custom branding
- Cable length
- Reduced installation depth
- Bezel color

Accessories

- Stainless steel niche
- PVC liner niche
- Concrete niche
- DMX Ctrl or CC Box

